



Condor-Werke

Gebr. Frede GmbH & Co. KG

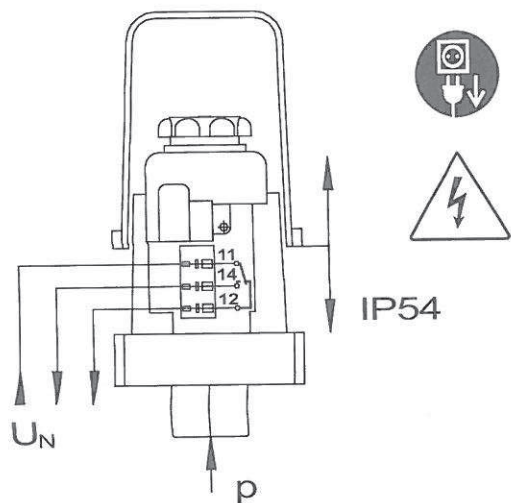
Warendorfer Straße 47-51
D-59320 Ennigerloh

Telefon (0 25 87) 89-0
Telefax (0 25 87) 89 140

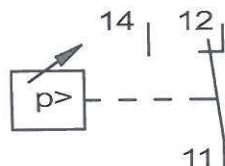
vertrieb@condor-werke.com
www.condor-werke.com

MDR 53

The relevant standards for running and installing electrical appliances are to be observed. Installation and connection by skilled personnel only, after installing accessories function of device to be checked by skilled personnel only.



EN/IEC 60947-5-1 (AC-15)			
I_e	I_{the}	NH00/gL	U_e (50/60Hz)
4A	10A	10A	250V~



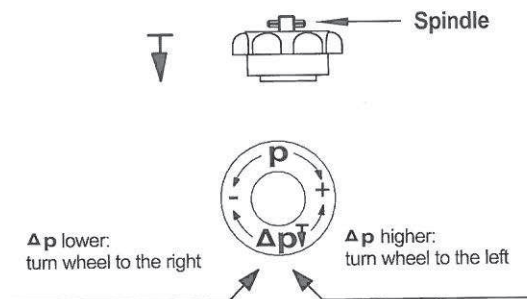
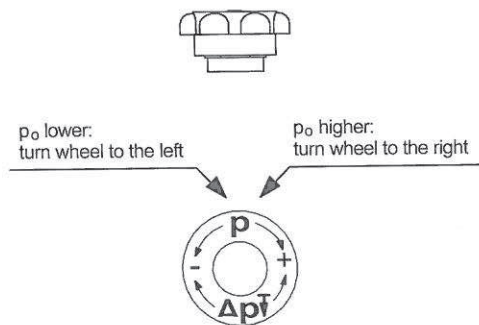
CAUTION: Pressure setting is only possible when applying pressure to the switch.

Cut-out pressure p_0

Differential Δp

$$\Delta p = p_0 - p_u$$

Press wheel downwards



If the spindle moves when turning, lowest possible Δp has been reached. In order to loosen, turn wheel to the left holding the spindle tight.

